

# ACCU-SORT®

# FAST Tag™ In-Motion



**Automatic placement of RFID tags and bar code labels**—Lower total cost of ownership versus manual application systems

**Flexible placement of RFID tag**—Allows optimal tag location for highest read rate

**Verification and automatic reject of defective tags before application to the carton**—Ensures no defective tags enter the supply chain

**Supports automatic/mixed-mode or batch mode operation with full EPC code management**—Operates in the mode best suited for operations; applies tags to only those cartons requiring tags

**Communications with WMS or ERP System**—Compatible with existing systems to minimize implementation costs

**Full performance diagnostics and reporting**—Makes troubleshooting easy and minimizes down-time; provides accurate performance data for process optimization

**Supports a variety of print technologies including thermal transfer and ink jet**—Ease of integration with the existing print/apply process

## Overview

FAST Tag In-Motion is a turnkey automated solution for placing, tracking and verifying RFID tags on cartons and pallets. FAST Tag In-Motion integrates seamlessly into existing material handling and data handling systems, providing a low-risk upgrade path from conventional bar code labeling systems.

This solution is part of Accu-Sort's "Tag-to-Ship" centralized system architecture, which allows it to be seamlessly integrated with your existing data management infrastructure through Accu-Sort's FAST Tag DataServer solution, making it scalable as your needs grow in the future.

The FAST Tag In-Motion integrates several key functions based on the specific needs of the customer. These functions include:

- Bar code scanning
- Bar code/human readable labeling
- RFID tag reading/writing
- RFID tagging
- RFID tag verification

## Technical Highlights

The architecture of the FAST Tag In-Motion system is shown on the back of this sheet.

The FAST Tag In-Motion labeling system is configured, controlled and monitored via the Accu-Sort FAST suite of software products. The FAST (Flexible, Automation, Solution, Tools) software foundation has been installed in over 400 systems to date, providing a robust, proven architecture to meet the most demanding RFID material handling system application.

This software also interfaces seamlessly with your WMS system through Accu-Sort's FAST Tag DataServer. The FAST Tag DataServer allocates and records unique EPC codes to ensure compliance. This data is stored in a centralized database to enable the tracking of carton from "Tag-to-Ship".

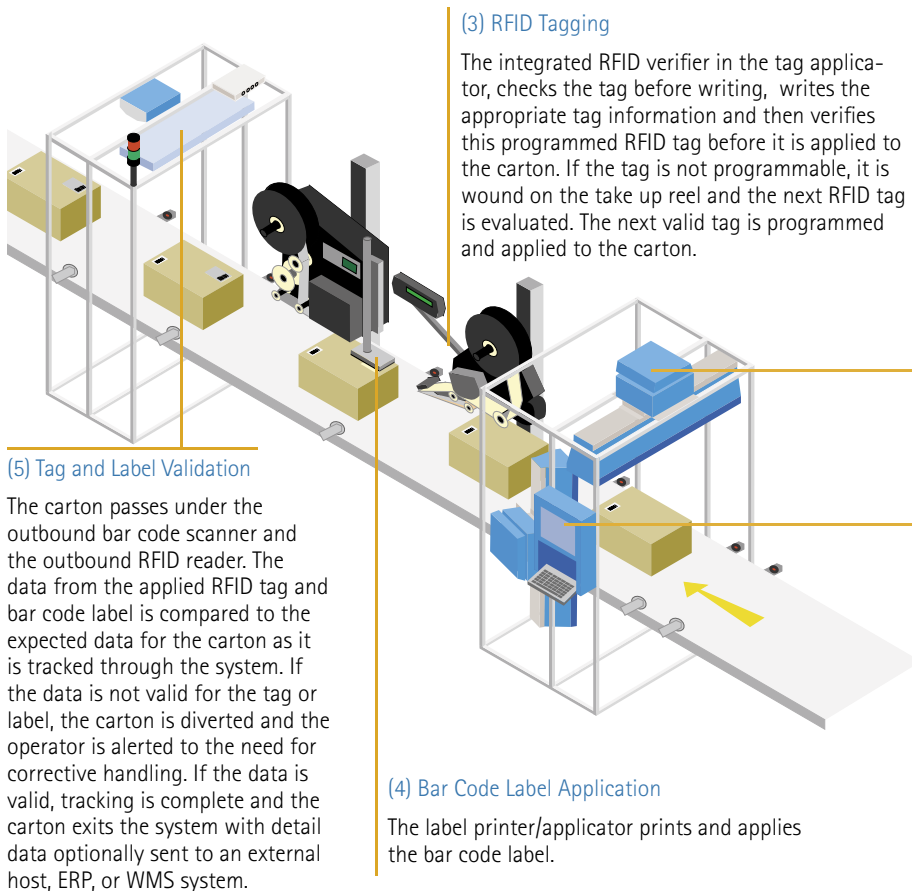
## System Development Methodology

The customer-specific configuration of FAST Tag In-Motion is determined as part of Accu-Sort's needs assessment process. This process, refined over 30 years, leverages the material handling and RFID expertise of our staff for the design of your optimal solution. It includes performing business assessments, process mapping and RF surveys of the customers facilities. After a system is designed, approved, built and tested at the Accu-Sort RFID center of excellence, it is shipped to your site for system installation and pilot testing. The pilot testing phase is a critical installation element to minimize disruptions to your existing supply chain and data management infrastructure. The system is optimized and tested to ensure compliance.



Partners in RFID Compliance

# FAST Tag In-Motion



### (3) RFID Tagging

The integrated RFID verifier in the tag applicator, checks the tag before writing, writes the appropriate tag information and then verifies this programmed RFID tag before it is applied to the carton. If the tag is not programmable, it is wound on the take up reel and the next RFID tag is evaluated. The next valid tag is programmed and applied to the carton.

### (2) Data Lookup

FAST Tag looks up the item in the product database and sends the RFID tag and bar code label format data to the corresponding applicator.

### (1) Inbound Identification

Tagging and labeling operations begin when a carton passes the induct photoeye. The inbound bar code scanner or camera (shown) reads the carton label and sends the decoded data to the FAST Tag controller.

### (6) System Control and Monitoring

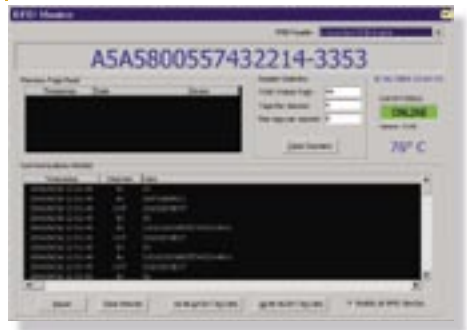
The FAST Tag software provides centralized system configuration and control. Users can set up label and tag fields, monitor system performance statistics as well as configure and tune line operating parameters.

### (5) Tag and Label Validation

The carton passes under the outbound bar code scanner and the outbound RFID reader. The data from the applied RFID tag and bar code label is compared to the expected data for the carton as it is tracked through the system. If the data is not valid for the tag or label, the carton is diverted and the operator is alerted to the need for corrective handling. If the data is valid, tracking is complete and the carton exits the system with detail data optionally sent to an external host, ERP, or WMS system.

### (4) Bar Code Label Application

The label printer/applicator prints and applies the bar code label.



## Specifications

### RFID

Read/Write Frequencies	902-928MHz
Protocols Supported	Class 0/0+, Class 1 and Future Gen 2
Tag Size Supported	4"x6", 4"x2", 4"x4", 4"x1", 2"x2"
EPC Code Management	Yes

### System Specifications

Printers Supported	Zebra, SATO, Datamax, Paxar, Printronix
Wireless LAN	802.11b
Serial Port	RS-232
USB Ports	2
Ethernet	1

### Physical Specifications

Operating Temperature	32°F to 113°F (0° to 45°C)
Power	230 or 110 VAC 50-60Hz



For more information about auto-ID and material handling solutions, contact us at:

ACCUSORT® SYSTEMS, inc.  
1-877-ASI-RFID  
info@accusort.com | www.accusort.com

VIDEOJET® TECHNOLOGIES, Inc.  
1-630-860-7300  
www.videojet.com

©2005 Accu-Sort Systems, inc. and Videojet Technologies, Inc. All rights reserved.

PN 1000056346R40 | 05-0161 | 17-MAY-2005 RAY

Available from Electronic Data Solutions - a business unit of Cross Automation 800.866.4568