

Omron NS to PLC Pass-through Programming

By Steve Jones

Cross Automation - Belmont, NC

April 5, 2007

This document describes the method used to configure an Omron NS touchscreen and CS/CJ PLC to allow programming the PLC via an ethernet connection to the NS and serial connection between the NS and PLC. The description and screenshots are based on CX-One software, ver. 2.

Step 1: Set up serial communications between the NS and CS/CJ. The protocol must be set to NT Link (1:N). Pass-through programming will not work with any other protocol.

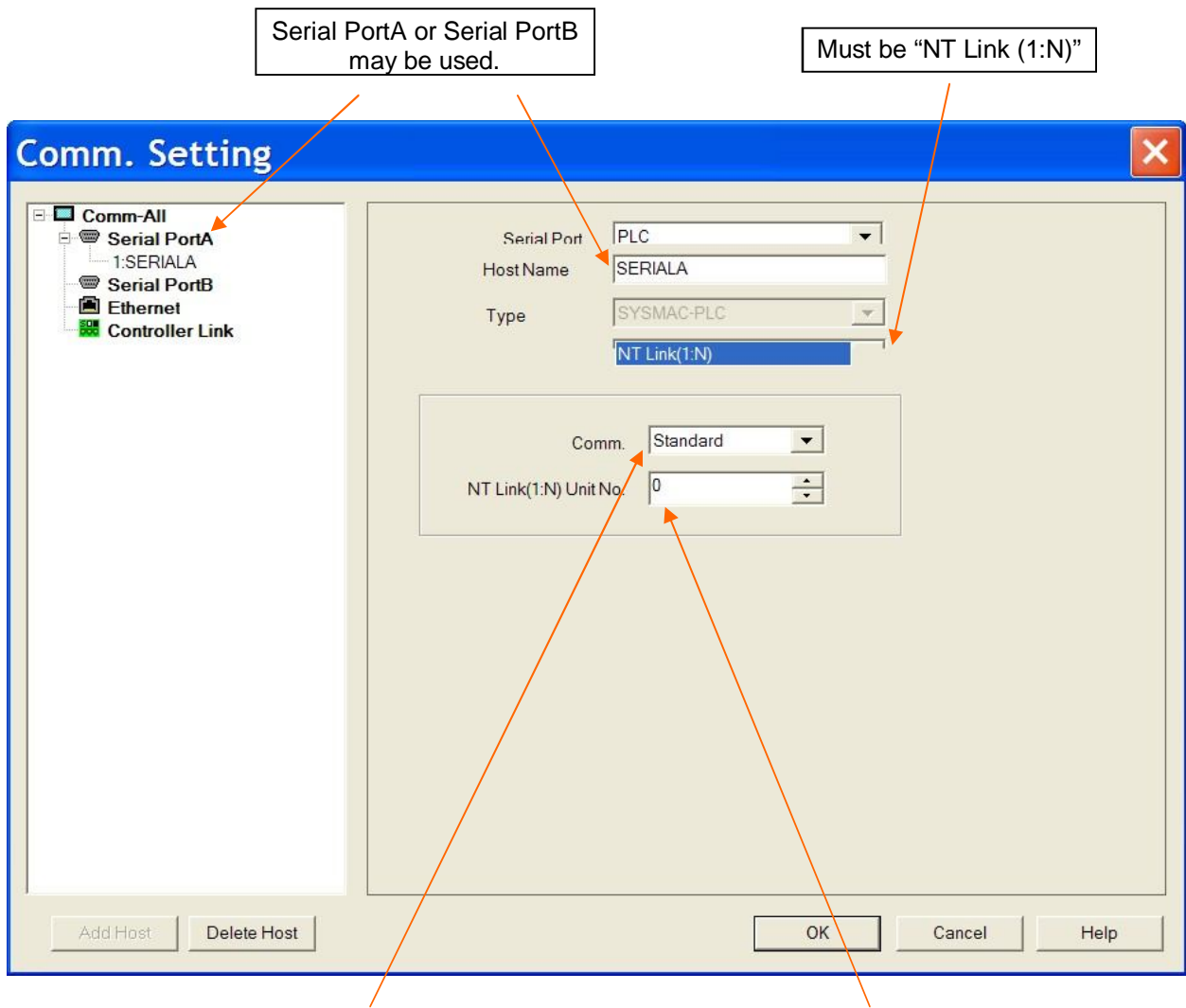
NS setup will be STANDARD" (38,400) or "HI-SPEED" (115,200).

Must be "NT Link (1:N)"

Note that the Unit Number is always 0. This will correlate with the NS settings.

Set this to 4 or greater

Figure 1. CX-Programmer "Settings" dialog



PLC setup will be 38,400 ("STANDARD") or 115,200 ("HI-SPEED").

This must correlate to the PLC setting which is always 0 (grayed out in PLC).

Figure 2. CX-Designer NS Communications Setting dialog—Serial

Step 2: Connect the NS to the PLC and verify that serial communications are active. Refer to Figure 1 and Figure 2 if any problems arise.

Step 3: Configure ethernet settings.

This may be any network number. Note this number—it will be referred to in the CX-Programmer ethernet setup.

The Node Address should be the same number as the last part of the IP Address

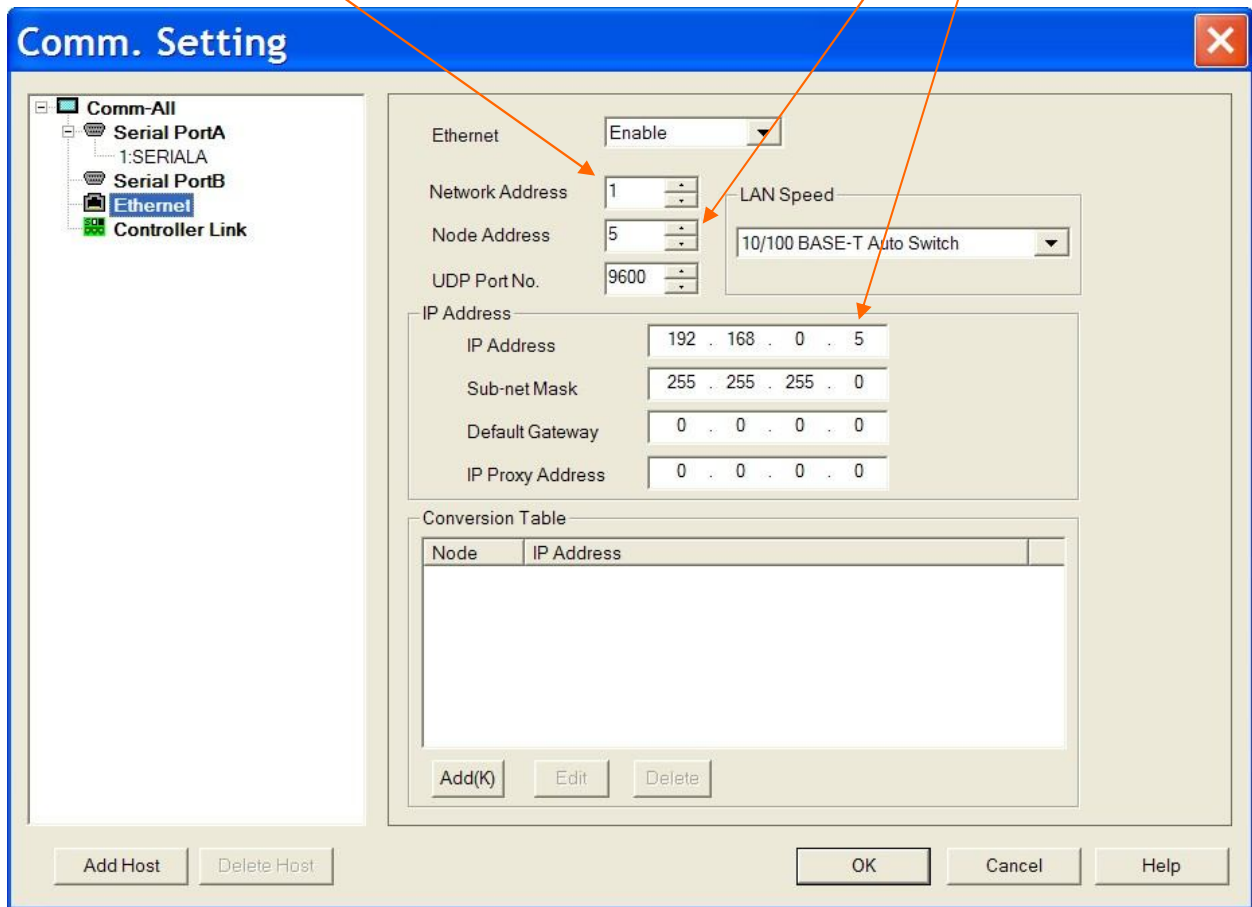


Figure 3. CX-Designer NS Communications Setting dialog—Ethernet

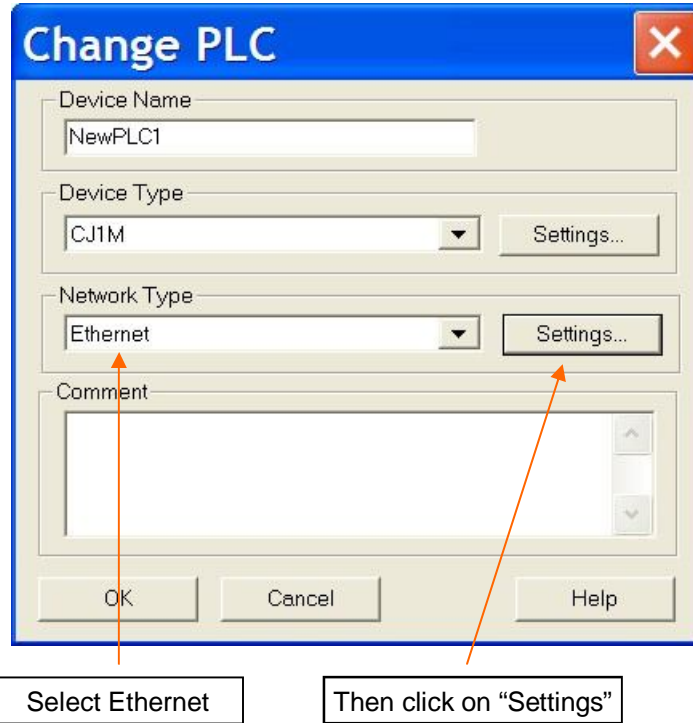


Figure 4. CX-Programmer Change PLC dialog

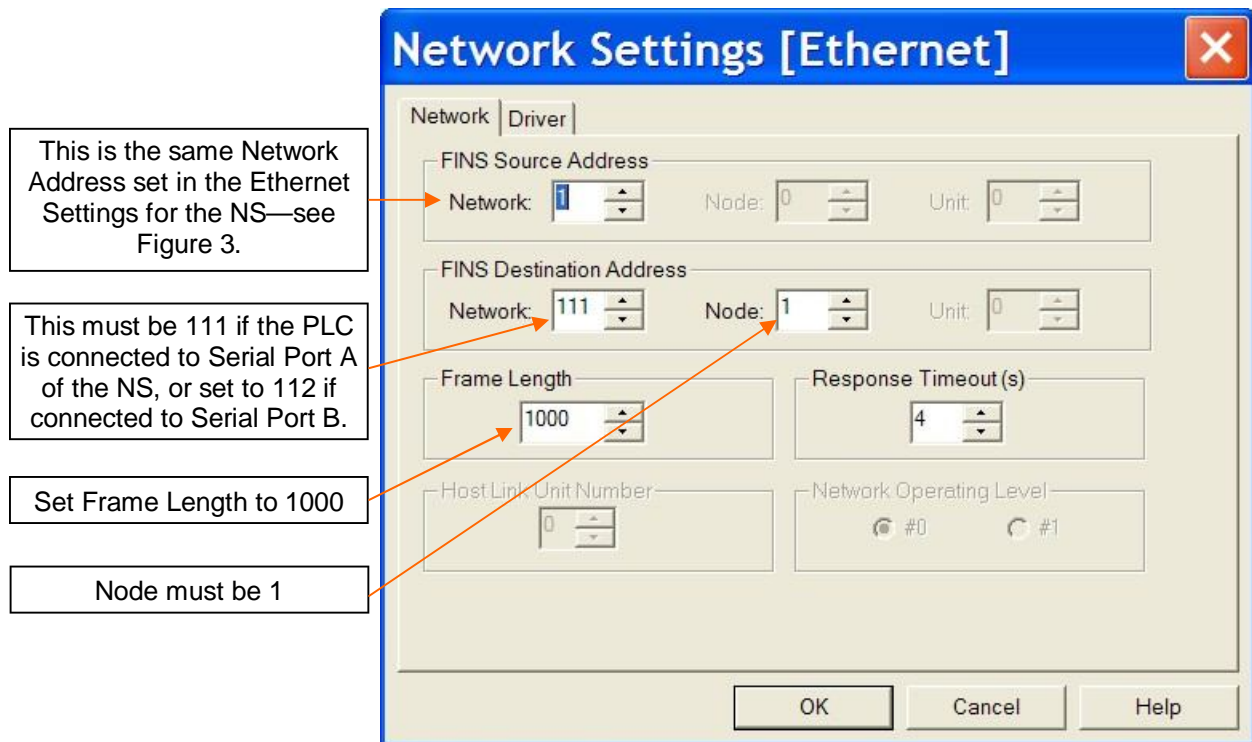
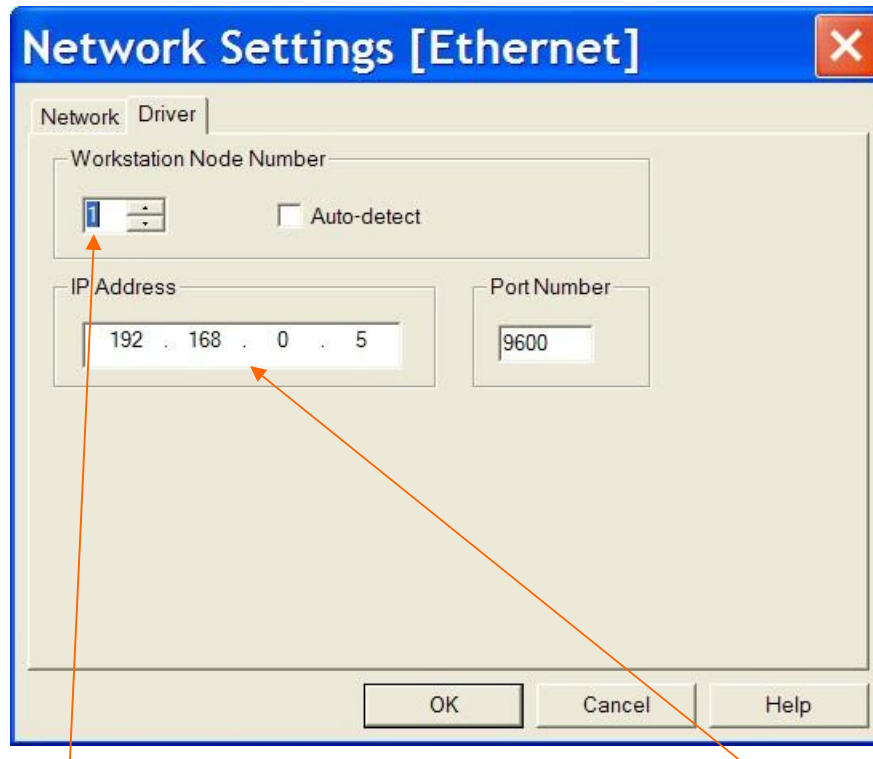


Figure 5. CX-Programmer Change PLC dialog—Network tab



This should be the same number as the last number in the computer's IP address; e.g. if the computer IP address is 192.168.0.42, then this number should be 42.

This is the IP address of the NS

Figure 6. CX-Programmer Change PLC dialog—Driver tab

Step 4: Go online with CX-Programmer. All upload and download operations should be available.